



Lakeridge
Health

Reimagining the Future of
Health Care in Durham Region

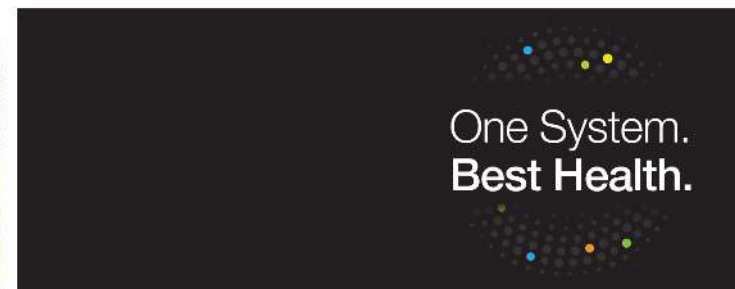
**A System with
No Boundaries**



About Lakeridge Health



- **5** Hospitals
- **4** Emergency Departments
- **9** Clinical Programs
- More than **7,900** team members
- Pinewood Centre and Durham Mental Health Services
- Home to the R.S. McLaughlin Durham Regional Cancer Centre
- New state-of-the-art long-term care home, Lakeridge Gardens



Our Vision, Mission, and Values

Vision



One System.
Best Health.

Mission



We empower
people to live
their **best health.**

Values

● Inclusion

● Compassion

● Innovation

● Teamwork

● Joy

Through a single system of care, focused on achieving best health, we can ensure our local health system is sustainable for generations to come.

Strategic Directions

STRATEGIC DIRECTIONS



Improve Population Health

Partner with primary care and other providers to promote prevention, health and wellness strategies that foster healthier communities.



Create an Integrated System of Care

Lead the transformation to a connected and integrated system of care in Durham Region.



Commitment to Individual Health Care

Continuously improve delivery of high quality care and services in acute, home and community settings.



Be a Workplace of Choice

Through a dedicated focus on team health, wellness, safety and wellbeing that supports a high-performing, adaptable and enjoyable workplace environment.

We are now poised for growth.

In addition to caring for those who are ill, we are **creating communities of health and wellness** in Brock, Pickering, Scugog, Ajax, Whitby, Oshawa, and Clarington.



Expanding and Increasing Capacity to Meet the Needs of our Communities



Proposed New Regional Hospital for Durham Region



Lessons from the COVID-19 Pandemic



Lessons from the COVID-19 Pandemic



Lakeridge Health collaborated with the **Black Physicians' Association of Ontario (BPAO)**, **Carea Community Health Centre**, **DurhamONE**, and **Durham Region Public Health** to support several COVID-19 vaccine clinics targeted to the Black community in the summer and early fall of 2021.

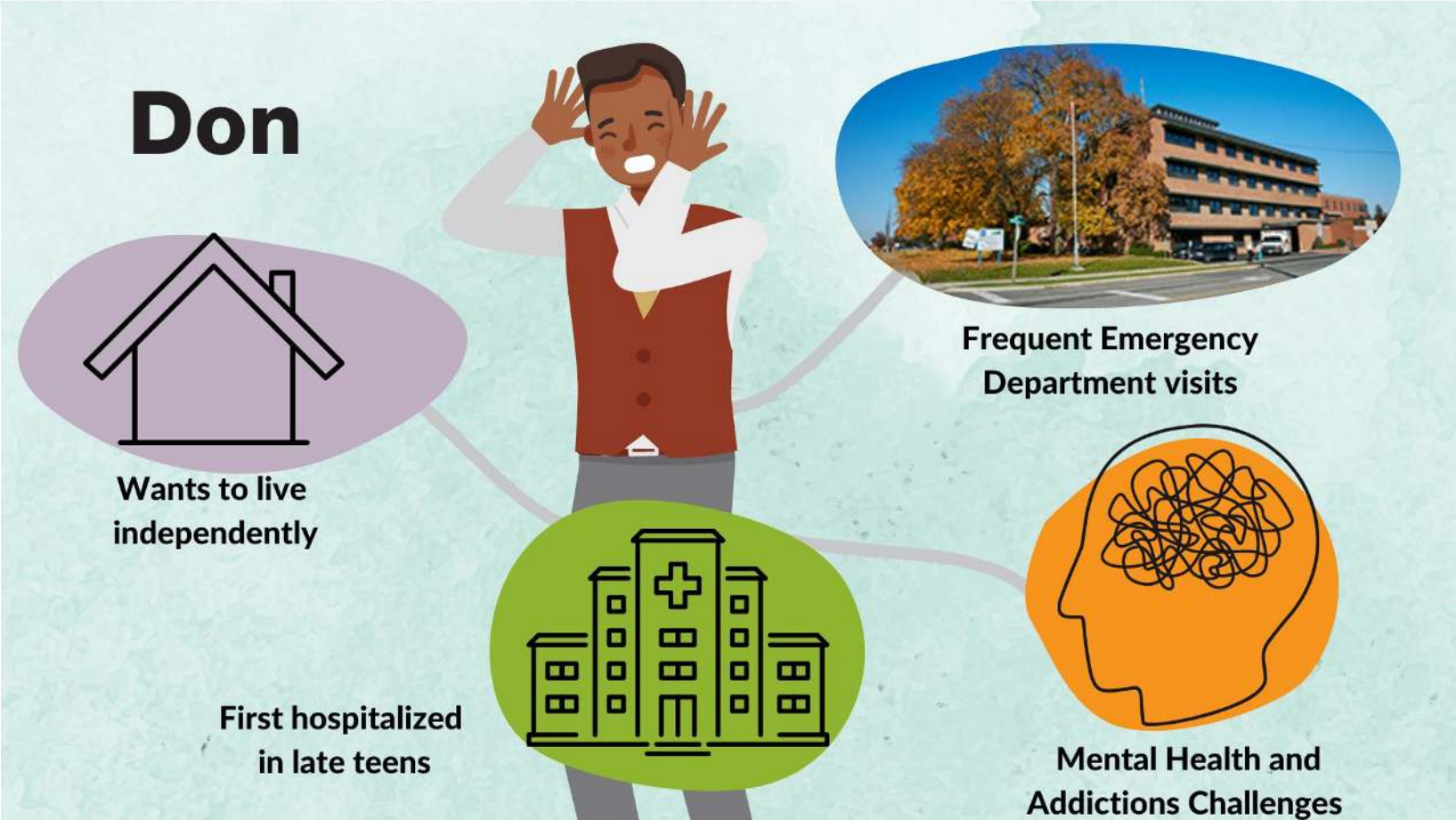
Through collaboration and
shared knowledge, we are creating



ONE SYSTEM

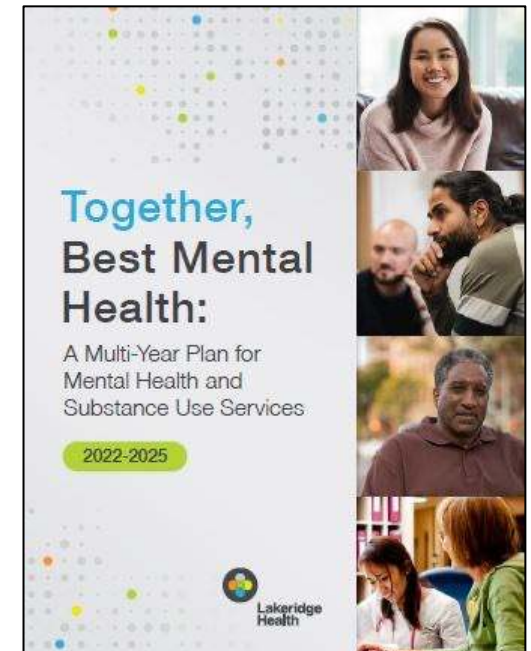
and customizing it for
the needs of individuals.

Don's Story



Strategy for Integrated Care: *Together, Best Mental Health*

- Launched *Together, Best Mental Health*: Lakeridge Health's three-year plan to deliver a more integrated system of mental health and substance use care in Durham Region.
- This plan will:
 - Help us transform how we plan and deliver services, providing clients with the right services, from the right people, in the right place, at the right time.
 - Help us evolve to provide care that is accessible, tailored to individual needs, easy to navigate, person focused, evidence based, equitable, and compassionate.
- A collaborative plan; reflects our deep partnerships with other agencies and groups, as well as clients, patients, and families in their journeys of care.



Integrating Home and Community Care Services with the Durham Ontario Health Team



Queen's University-Lakeridge Health Collaboration



- An innovative and first-of-its-kind-in-Canada education and training approach to address the physician shortage and gap in access to primary care.
- Designed to graduate practice-ready, community-focused physicians.
- There will be 20 new medical school seats available at the Lakeridge Health satellite campus.
- Queen's University students will undergo classroom training at Lakeridge Health and engage in workplace experiences in communities across the region.



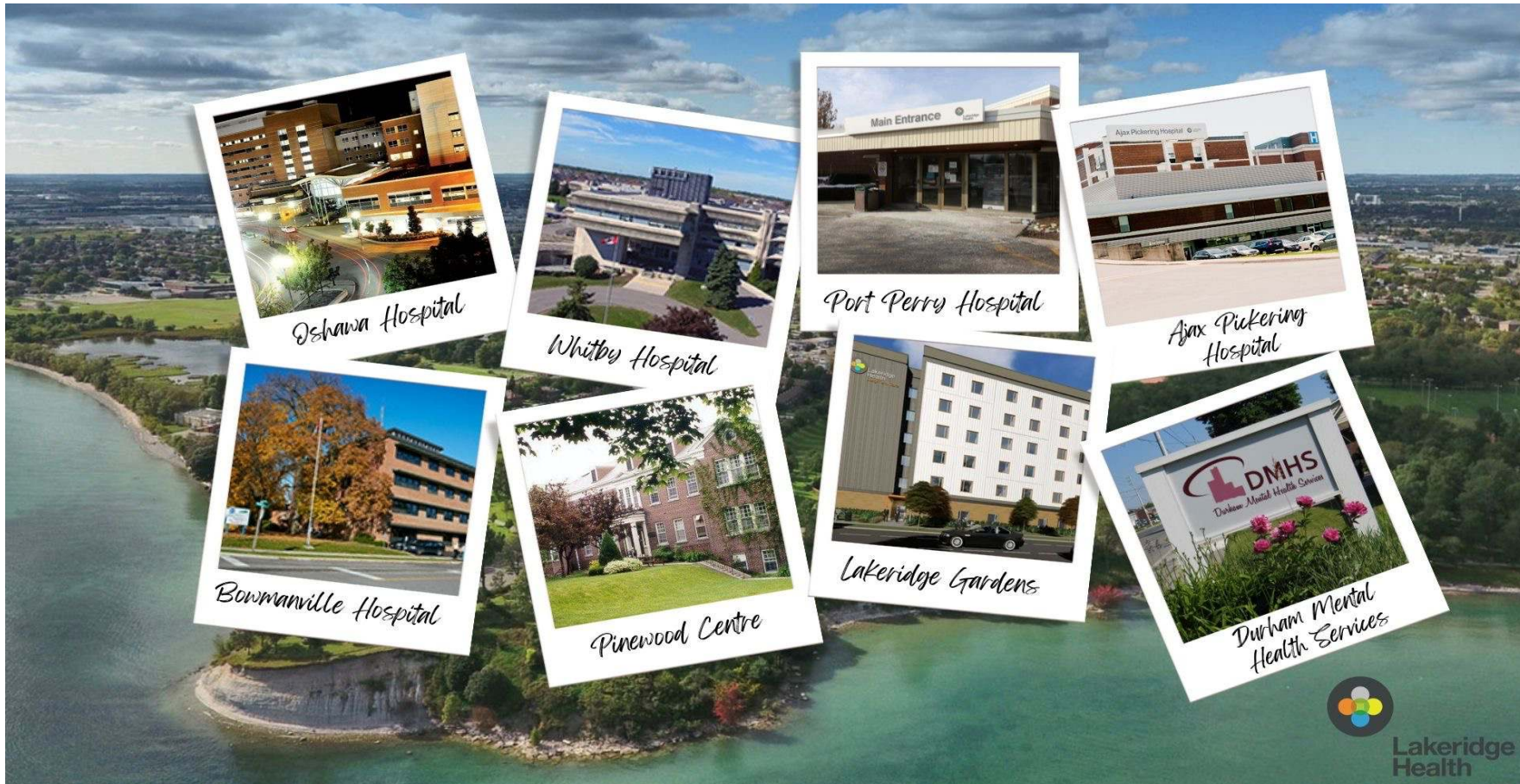
**September 30:
Planning Summit**

Power of an Integrated Care System



What We Aspire to Achieve

Think and Act as ONE Regional Hospital System





Lakeridge
Health

One System. **Best Health.**